

# — THE SPRUCE

TOWNHOMES



2035 SQ.FT. 3 BED 2.5 BATH

INCLUDING 365 SQ.FT. FINISHED BASEMENT

[claridgehomes.com](https://claridgehomes.com)



# THE SPRUCE

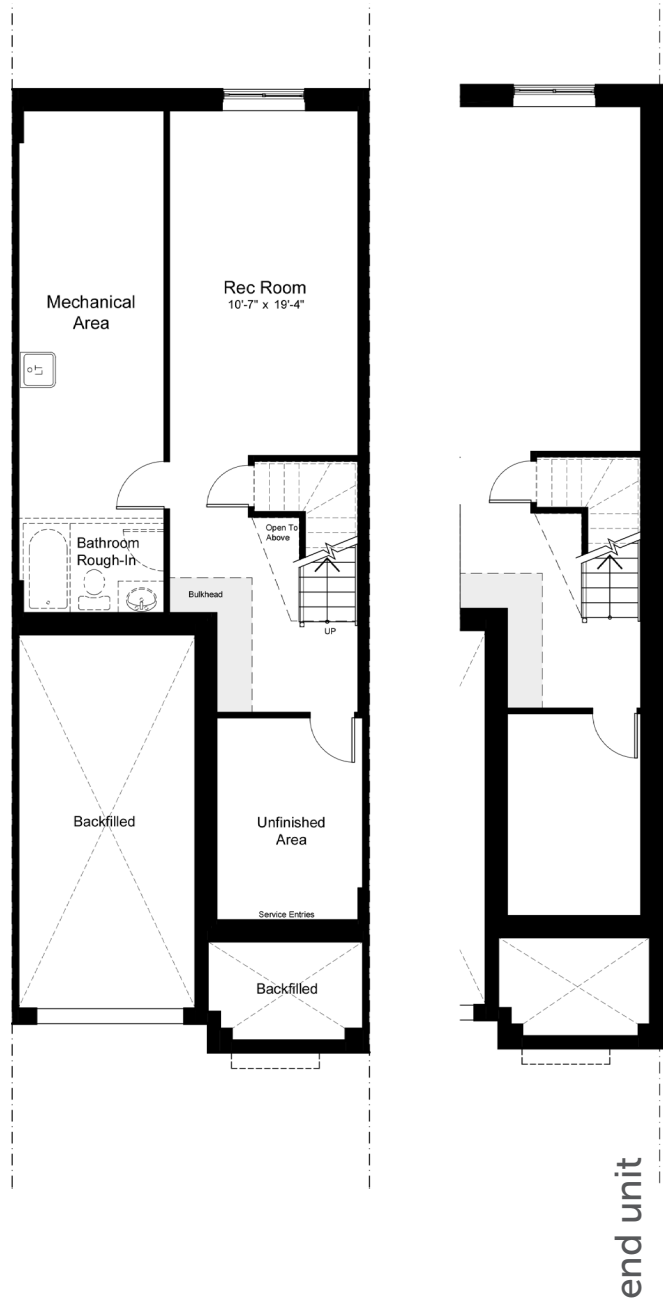
TOWNHOMES

2035 SQ.FT. 3 BED 2.5 BATH

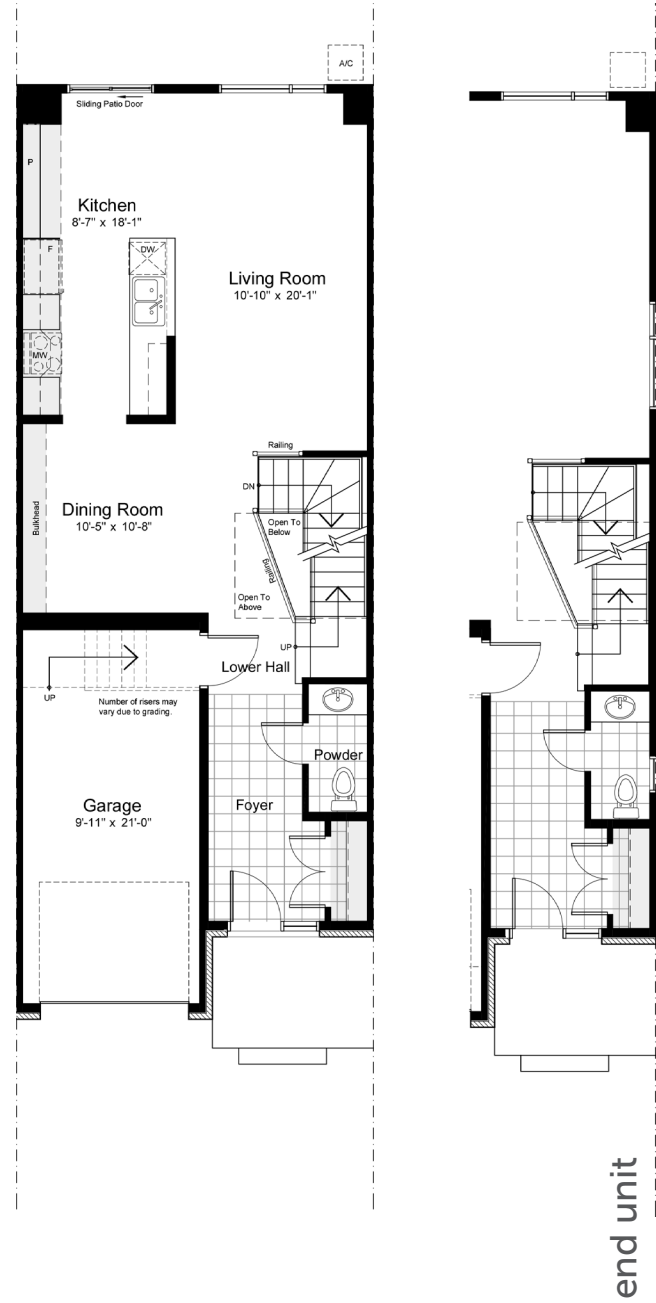
INCLUDING 365 SQ.FT. FINISHED BASEMENT

OPTIONAL UPGRADE

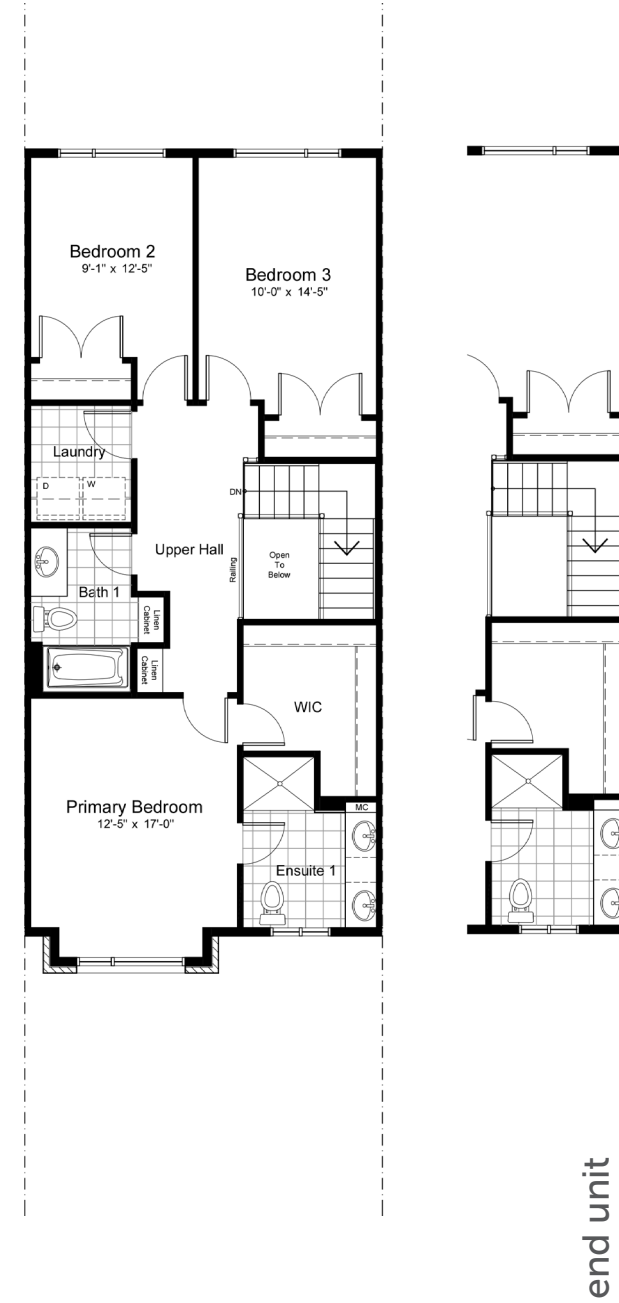
FINISHED BASEMENT 382 SQ.FT.



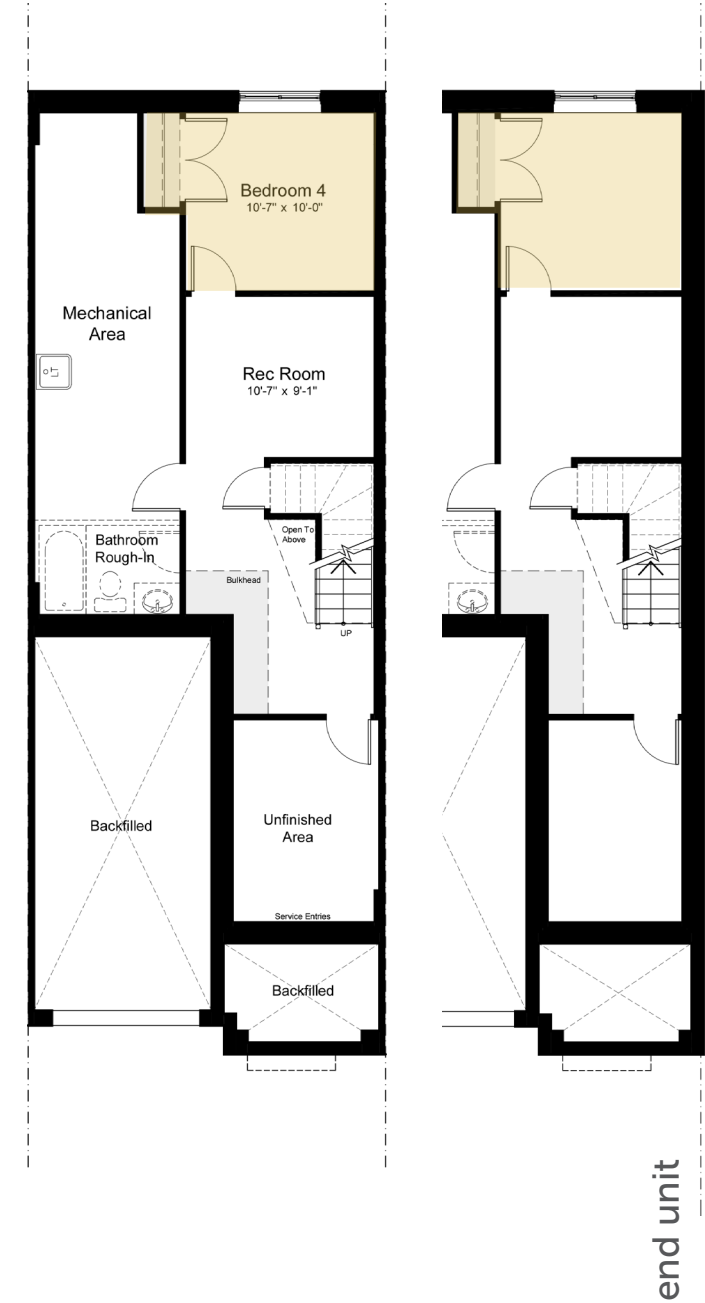
basement



ground



second



FINISHED REC ROOM  
+ BASEMENT BEDROOM

**DISCLAIMER** Materials, specifications and floor plans are subject to change without notice. All dimensions are approximate and may not be to scale. Actual usable floor space may vary from the stated floor area. Exterior elevations are artistic concepts only: window size and design, roof pitch and brick detail may vary from plan. Layout for kitchen, furnace, HWT and laundry tub may vary from plan. Vertical and horizontal bulkheads, which are not shown on plan may be required for structural plumbing and ventilation runs. E. & O.E. Issued: May 2026