

— THE PINE

TOWNHOMES



1750 SQ.FT. 3 BED 2.5 BATH

INCLUDING 280 SQ.FT. FINISHED BASEMENT

claridgehomes.com



THE PINE

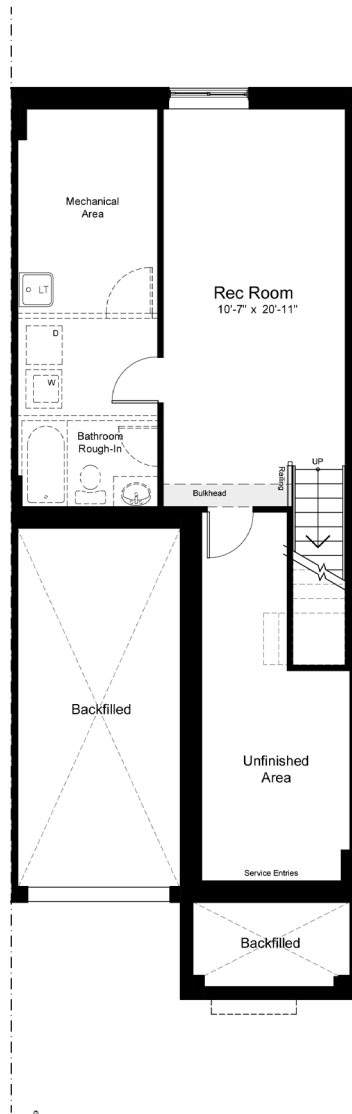
TOWNHOMES

1750 SQ.FT. 3 BED 2.5 BATH

INCLUDING 280 SQ.FT. FINISHED BASEMENT

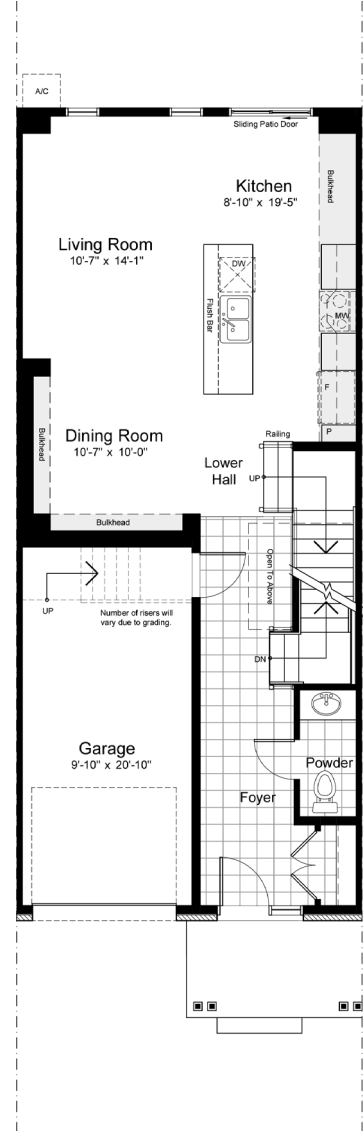
OPTIONAL UPGRADE

FINISHED BASEMENT 297 SQ.FT.



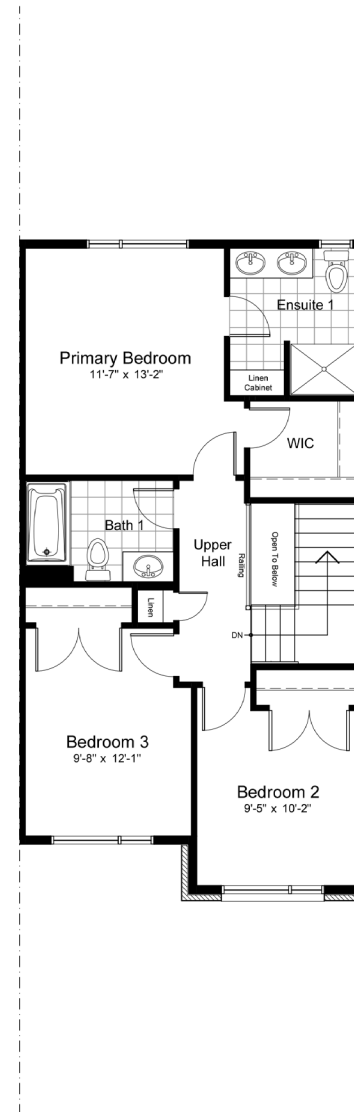
end unit

basement



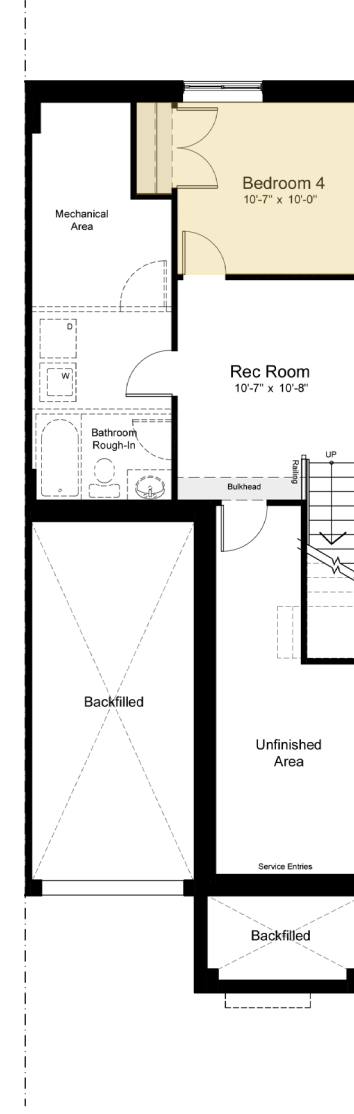
end unit

ground



end unit

second



end unit

FINISHED REC ROOM + BASEMENT BEDROOM

DISCLAIMER Materials, specifications and floor plans are subject to change without notice. All dimensions are approximate and may not be to scale. Actual usable floor space may vary from the stated floor area. Exterior elevations are artistic concepts only: window size and design, roof pitch and brick detail may vary from plan. Layout for kitchen, furnace, HWT and laundry tub may vary from plan. Vertical and horizontal bulkheads, which are not shown on plan may be required for structural plumbing and ventilation runs. E. & O.E. Issued: May 2026