

— THE ELM

TOWNHOMES



2280 SQ.FT. 3 BED 2.5 BATH

INCLUDING 455 SQ.FT. FINISHED BASEMENT

claridgehomes.com



THE ELM

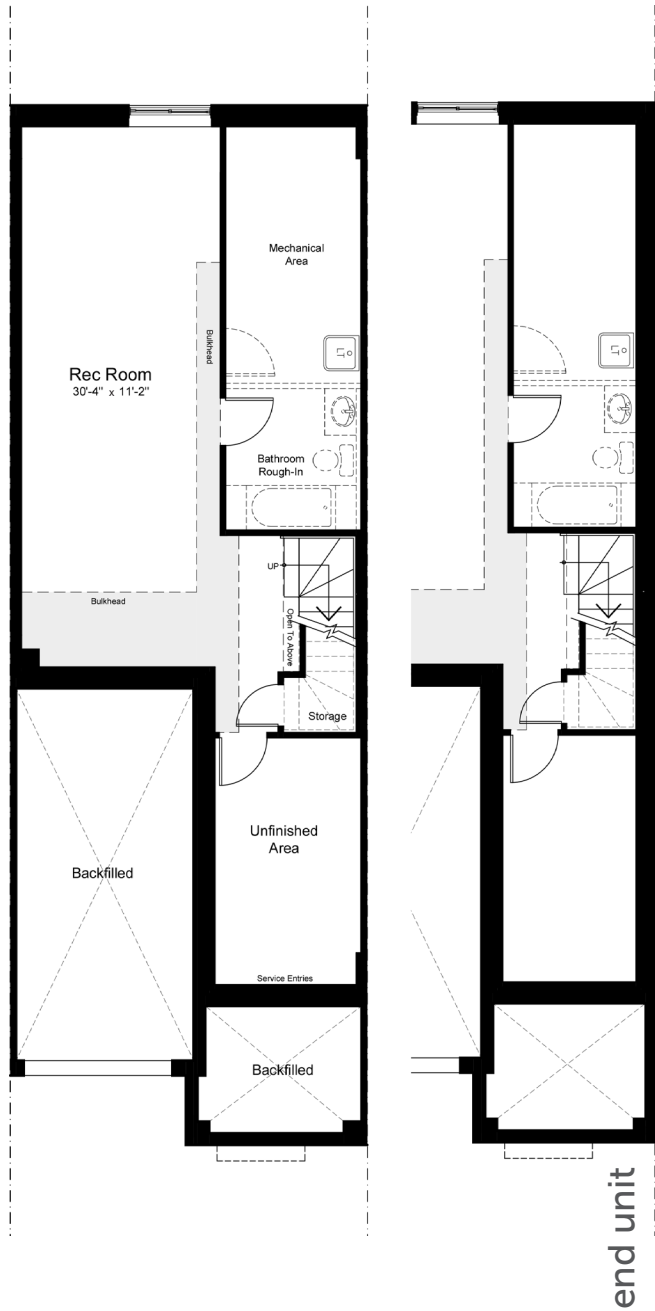
TOWNHOMES

2280 SQ.FT. 3 BED 2.5 BATH

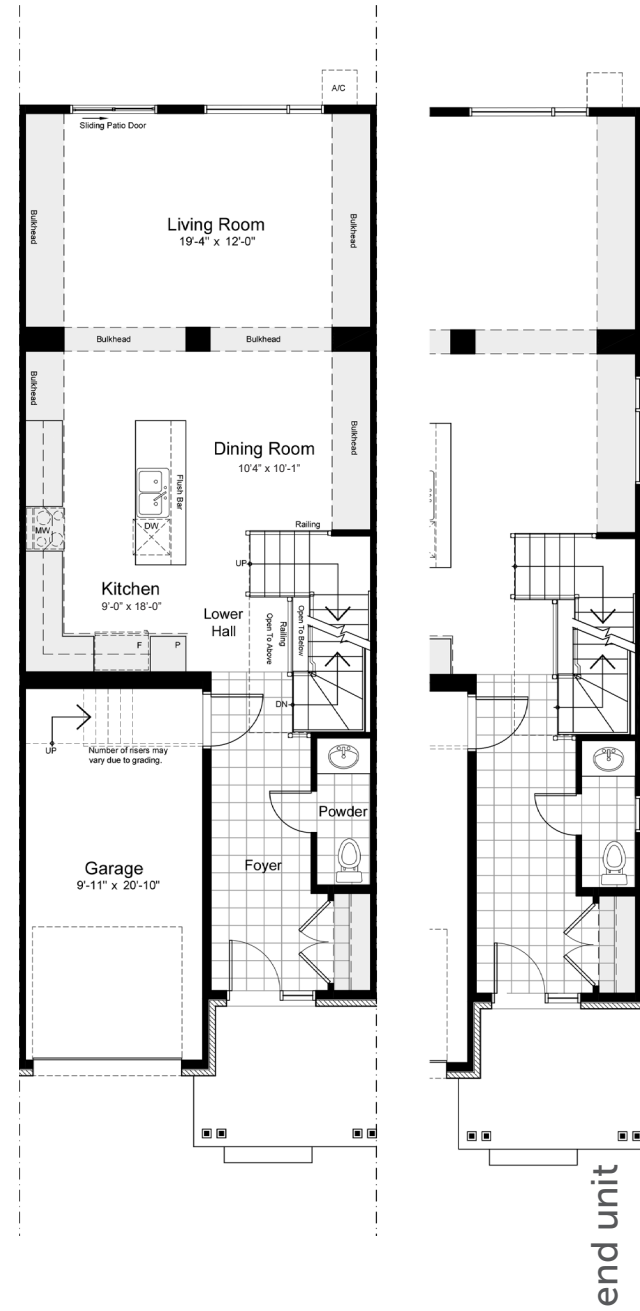
INCLUDING 455 SQ.FT. FINISHED BASEMENT

OPTIONAL UPGRADE

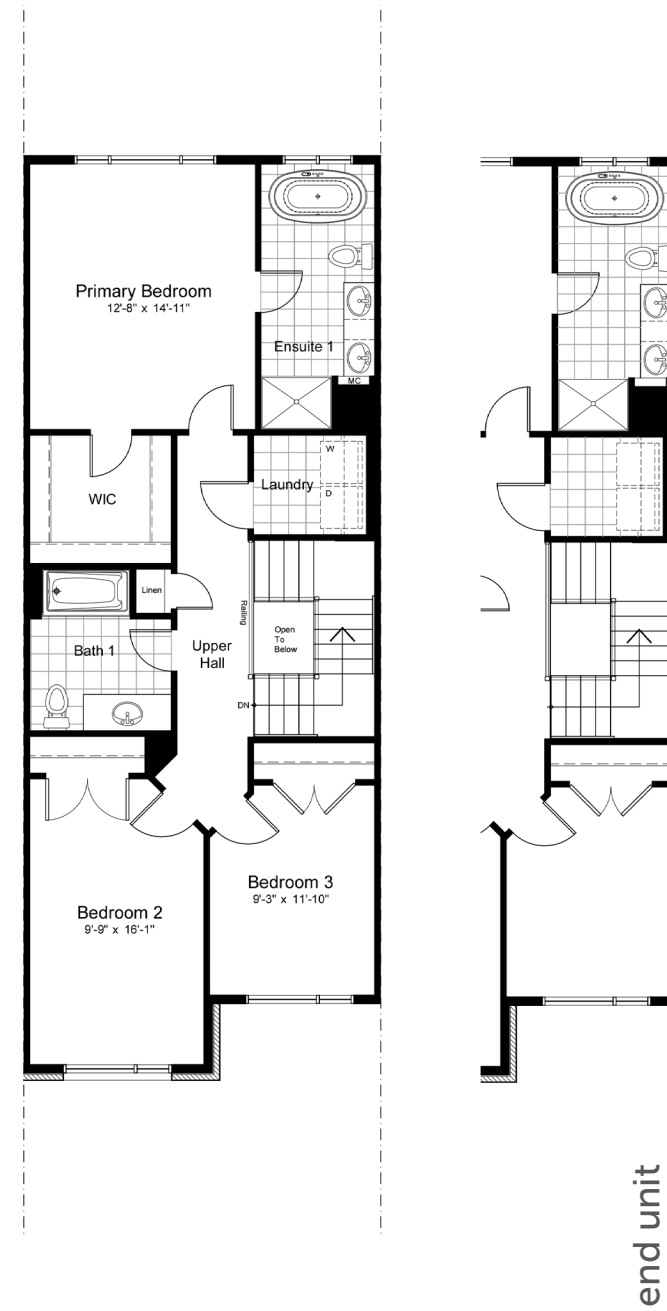
FINISHED BASEMENT 472 SQ.FT.



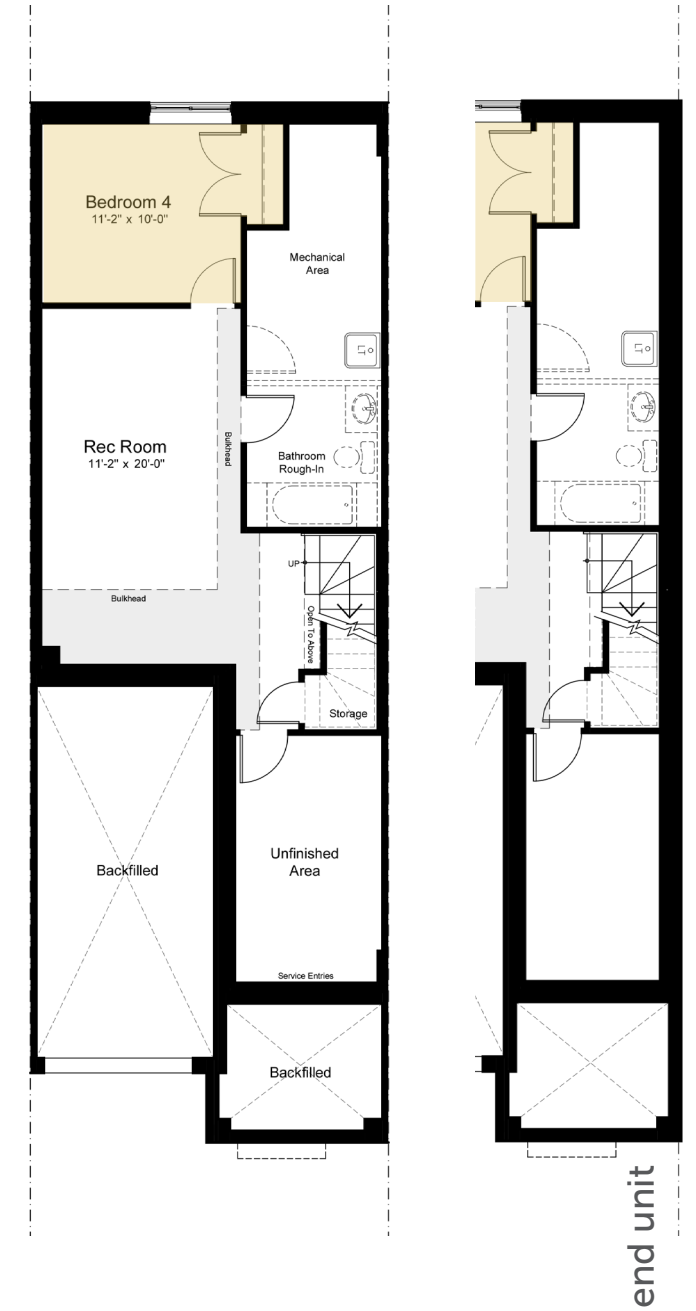
basement



ground



second



FINISHED REC ROOM + BASEMENT BEDROOM

DISCLAIMER Materials, specifications and floor plans are subject to change without notice. All dimensions are approximate and may not be to scale. Actual usable floor space may vary from the stated floor area. Exterior elevations are artistic concepts only: window size and design, roof pitch and brick detail may vary from plan. Layout for kitchen, furnace, HWT and laundry tub may vary from plan. Vertical and horizontal bulkheads, which are not shown on plan may be required for structural plumbing and ventilation runs. E. & O.E. Issued: May 2026